

Choose Life Ministry



Welcome to the

Liaison Program



A practical guide for individual liaisons

Equipping your church to connect those in need
with compassionate, Christ-centered support.

Resource Booklet





Welcome / How It Works



Welcome



Thank you for serving as a Liaison with Choose Life Ministry. Your role helps create a practical bridge between your church and those in need.

This booklet is designed to keep your role simple, clear, and sustainable.



Inside this booklet



- ♥ Referral guidance
- ♥ Sample announcements and communication tools
- ♥ Ways your church can help
- ♥ Contact and next-step information

How It Works



1. Stay Connected

You will receive updates, resources, and opportunities to share with your church.



2. Communicate Clearly

You help pass along important information, needs, and next steps within your church.



3. Connect People

When someone needs support, you help connect them to the right ministry contact or resource.



4. Encourage Involvement

Invite your church to pray, give, volunteer, and participate as they are able.

A Simple Role with a Meaningful Impact



You are not expected to carry every need alone. Your role is to stay connected, communicate clearly, and help open the door to support.



Choose Life Ministry



Thank you for saying yes to serving as a Liaison with Choose Life Ministry.

Your willingness to step into this role matters. Across our communities, many women are quietly carrying burdens that are difficult to name and even harder to face alone: trauma, addiction, mental-health struggles, unexpected pregnancy, abuse, eating disorders, self-harm, and other life-altering challenges. Many of them are already connected to churches, families, and communities that care deeply, but sometimes the next step is unclear.

That is where this role becomes so meaningful.

As a Liaison, you are helping create a practical bridge between your church and the women we serve. You are not being asked to carry every need, solve every crisis, or become the expert in every situation. Your role is much simpler and more sustainable: to stay connected, communicate clearly, share opportunities, and help open the door when someone needs support.

This booklet has been created to make that role as clear and practical as possible. Inside, you will find guidance, sample communication tools, referral information, and simple ways your church can participate in the work of bringing hope, healing, and restoration to women in need.

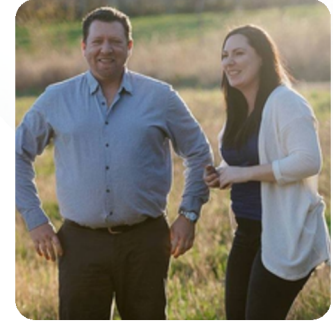
At Choose Life Ministry, we believe the Church has a vital role to play in caring for those who are hurting. We also recognize that churches need trusted partners when situations require more time, structure, and support than they can provide on their own. Our hope is that this Liaison Program will strengthen that partnership and make it easier for churches to respond with compassion, wisdom, and confidence.

Thank you for standing with us. Thank you for caring about women who need a safe place to heal. Thank you for helping your church stay connected to a ministry that exists to see lives transformed through Christ-centered support.

With gratitude,

A handwritten signature in purple ink, appearing to read 'Bradley Holbrook'.

Bradley Holbrook
Executive Director
Choose Life Ministry



*Bradley Holbrook, Executive
Director with his wife Kassie
Holbrook, Programming Director*





Resources

Inside this resource booklet



This booklet provides an overview of key programs, ministry resources, and print materials designed to help you share the work of Choose Life Ministry.



Page

5

13-Week Resident Program

A Christ-centered residential healing program focused on long-term transformation through discipleship, counselling, life skills, and community living.



Page

6

Pastoral Burnout Recovery & Prevention Program

A Christ-centered care program for pastors and ministry leaders needing rest, recovery, renewal, and practical support.



Page

7

7-Day Intensive Program

A short-term focused week of teaching, counselling, and rest for those exploring next steps or needing immediate support.



Page

8

Our Ministries

An overview of the ministry's programs, outreach, and support offerings.



Page

9

How Funding Flows

See how donations and support flow into ministry work and program impact.



Pages

10-11

Tri-fold Brochure for Printing

This section includes a ready-to-print tri-fold brochure for sharing the ministry with others.



Homestead for Hope

Our 13-Week Resident Program

A Christ-centered residential healing journey for women 18+ seeking freedom from life-controlling issues

A Program Designed for Transformation

Our flagship residency is a 13-week immersive community living program designed for long-term transformation. Residents step into a structured, faith-based environment where they receive professional counselling, life-skills

development, biblical teaching, worship, and supportive community living. The Homestead for Hope is a peaceful, faith-based community on 160 acres in Saskatchewan - a place to heal, restore, and find lasting hope.



**FREEDOM
SESSION**

At the heart of the program is Freedom Session, a powerful healing-discipleship journey that invites participants to rewrite their story with a God-inspired ending. Through biblical teaching, small-group discussion, and personal reflection, Jesus heals the heart and leads people toward freedom and purpose.

\$50 application fee
secures placement once accepted.

What's Included

- Tuition-free program
- All food and lodging
- Program materials
- Professional counselling
- Faith-based teaching and worship
- Supportive community living

We Help Women Facing

Substance abuse	Self-harm behaviors
Depression and anxiety	Trauma and abuse
Eating disorders	Unexpected pregnancy

PASTORAL BURNOUT

Recovery & Prevention

A Christ-centered care program for pastors and ministry leaders to rest, recover, and renew.



1. A PLACE TO PAUSE

Pastoral ministry can be deeply meaningful, but it can also be emotionally, spiritually, and physically demanding. This restorative offering provides space to step away from constant pressure and enter a peaceful, faith-based environment designed for rest and renewal.



2. RECOVERY & PREVENTION

Whether you are experiencing active burnout or recognizing the early signs of exhaustion, this support is designed to help pastors and ministry leaders slow down, reflect, receive care, and rebuild healthy rhythms before deeper fatigue takes hold.



3. A PEACEFUL PLACE TO HEAL

This program offers a quiet, Christ-centered setting where pastors and leaders can breathe, rest, pray, and begin again with renewed strength and clarity.

\$50 | APPLICATION FEE
SECURES PLACEMENT ONCE ACCEPTED.

WHAT'S INCLUDED



Pastoral care and spiritual encouragement



Prayer and Christ-centered support



Time for rest, reflection, and renewal



Practical tools for healthy rhythms and boundaries



A peaceful retreat setting



Space to discern next steps in ministry and life

WE HELP LEADERS FACING



Burnout and exhaustion



Compassion fatigue



Stress and overwhelm



Discouragement and isolation



Ministry strain



Family and relational pressure

Homestead for Hope

Our 7-Day Intensive

A focused week of teaching, counselling, and rest for women 18+ seeking freedom from life-controlling issues.



1. A Week Set Apart

Our 7-Day Intensive offers a focused week of teaching, counselling, and rest. Step away from daily pressures and into a structured environment built for breakthrough in a safe, Christ-centered setting.

2. Designed for Your Next Step

This intensive is ideal for women who are exploring the program or who are unable to commit to a longer stay. It provides space to pause, reflect, receive support, and prayerfully consider next steps.

5. A Peaceful Place to Heal

The Homestead is a peaceful, faith-based community on 160 acres in Saskatchewan — a place to breathe, rest, and begin again.

What's Included



Focused biblical teaching



Professional counselling



Rest and reflection



Structured supportive environment



Prayer and Christ-centered care



Time away from daily pressures

We Help Women Facing



Substance abuse



Self-harm behaviors



Depression and anxiety



Trauma and abuse



Eating disorders



Unexpected pregnancy

Connect With Our Ministries

THREE EXPRESSIONS OF ONE MISSION



Choose Life Ministry

Faith-based ministry offering hope, healing, and support.

chooselifeministry.ca



Second Chance Thrift Boutique

Shop with purpose and support life-changing ministry through our thrift boutiques.

secondchancethrift.ca



**HOMESTEAD
FOR HOPE**
A CHOOSE LIFE MINISTRY

Homestead for Hope

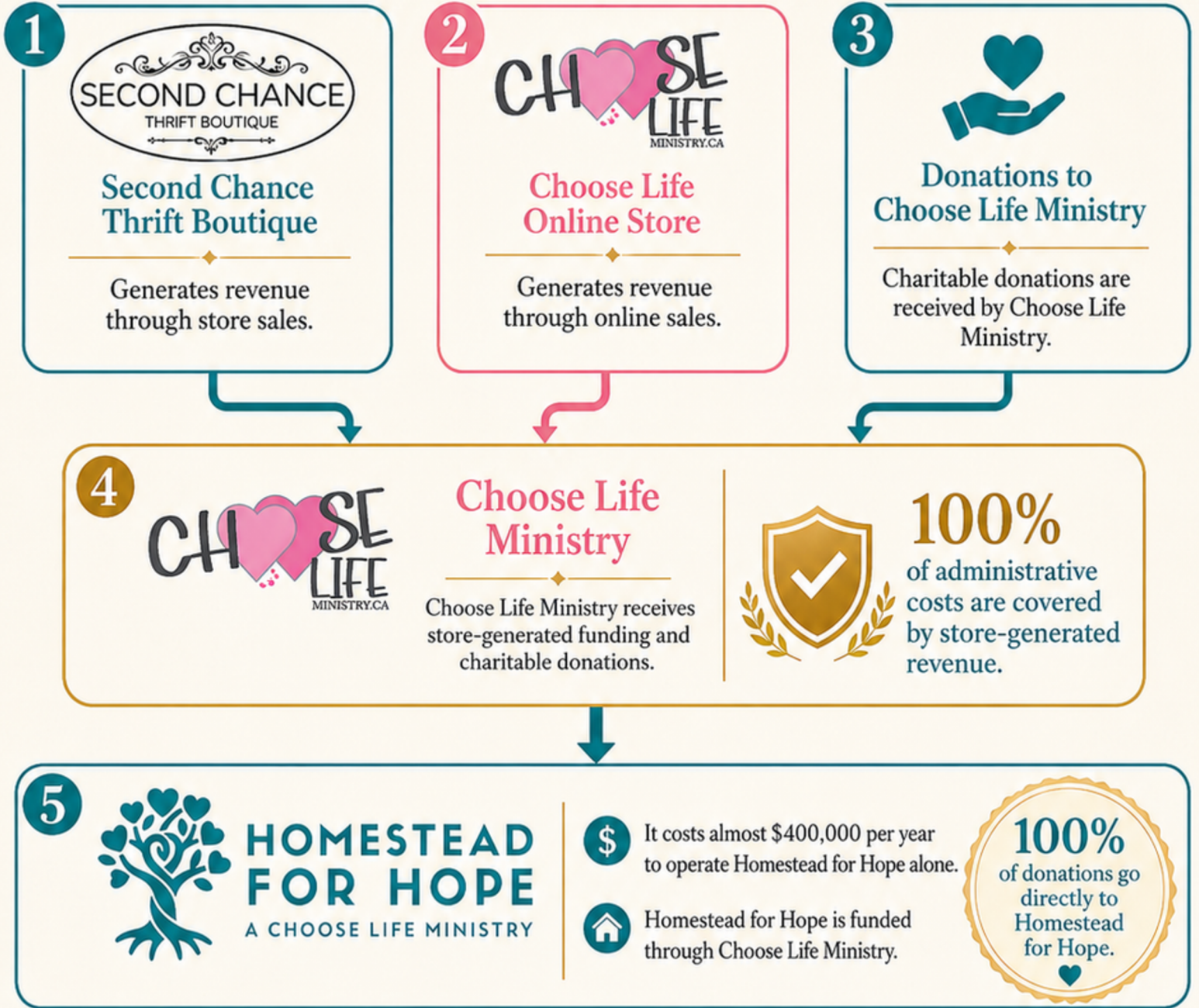
A place of healing, structure, and support for women seeking freedom and restoration.

homesteadforhope.com

One mission. Three ways to connect.

How Funding Flows

How shopping and giving support Choose Life Ministry and Homestead for Hope



What this means

- ♥ Store-generated revenue covers 100% of administrative costs.
- ♥ Every dollar donated to Choose Life Ministry goes to Homestead for Hope.
- ♥ Additional store-generated funds also help support Homestead for Hope.



WE'RE RAISING

\$100,000

AND WE NEED YOUR HELP!

100%

OF DONATIONS GO DIRECTLY TO SUPPORTING RESIDENTS AND PROGRAMMING COSTS



FOR MORE INFORMATION SCAN HERE OR TO DONATE



ONLINE AT chooselifeministry.ca/donate



AUTO CREDIT OR DEBIT CARD PAYMENTS (see form below)



ETRANSFER TO office@chooselifeministry.ca

SCAN ME



Name: _____

Address: _____

Phone #: _____ Email: _____

Gift Amount: \$25 \$50 \$75 \$100 Other \$ _____

Frequency: One-time Monthly

I want my monthly gift to help _____

Please bill my: Credit Card Bank Account

Name on Card: _____

Card #: _____

Expiry: _____ CVC #: _____

Signature: _____ Date: _____

I hereby authorize Choose Life Ministry Inc. to withdraw the above amount on the date(s) required to charge to my personal debit card or bank account. I understand that any unprocessed donations may be collected as any time by contacting the office.



HOMESTEAD FOR HOPE A CHOOSE LIFE MINISTRY

We Provide No Cost

- ✓ 7-day intensive courses
- ✓ 13-week freedom program
- ✓ Professional counselling
- ✓ Life skill resources
- ✓ Faith-based healing
- ✓ Community living

Every year in Canada, millions of adult women face trauma or mental-health struggles.

Need Help?

homesteadforhope.com/apply



Our Program

A 13-Week Residential Healing Program

Our residential program is a 13-week, Christ-centered healing journey designed to welcome up to six women at a time into a safe, structured, and supportive home environment.

Residents work through **Freedom Session** along with additional teaching, discipleship, life-skills development, personal reflection, and supportive care. Each woman is given space to begin addressing the life-altering challenges she has faced while discovering hope, healing, and lasting freedom.



Safe Home
Structured,
supportive
environment



Healing Journey
Freedom Session
and discipleship



Small Community
Up to six
residents at
a time

FREEDOM + SESSION

Freedom Session is a powerful, healing-discipleship journey, inviting you to rewrite your story with a God-inspired ending. Through biblical teaching, small group discussion and personal reflection, Jesus will heal your heart and empower you to live a life of freedom and purpose.

Our Facility



The Homestead for Hope —
A quiet, restored farmhouse on
160 acres near Gainsborough, SK.

The Homestead for Hope rests on a beautiful 160-acre property near Gainsborough, Saskatchewan. With wide open prairie, quiet green space, and a small stream running through the land, the Homestead offers residents a peaceful place to step away, breathe, and begin again.

At the heart of the property stands an original stone farmhouse, lovingly renovated and restored to provide a warm, intimate home for program participants.

Our Mission

Helping Women Find Freedom

Choose Life Ministry was founded to establish a place for young women ages 18+ to find freedom from life-altering challenges, including substance abuse, mental illness, unexpected pregnancy, the effects of abuse, eating disorders, and self-harm behaviours.

As our ministry grows, we are expanding our reach to offer Christ-centered pastoral care, marriage intensives, and future support for men ages 18+, helping individuals and families find healing, freedom, and restoration.

“ *A place to heal.
A home to
begin again.
A path toward
freedom.* ”